



MELBOURNE
SOCIAL EQUITY
INSTITUTE



Annual Report 2016

Research and engagement highlights
from the Melbourne Social Equity Institute

Annual Report 2016

Research and engagement highlights
from the Melbourne Social Equity Institute

First printed May 2017.

An electronic version of this document can be obtained from
www.socialequity.unimelb.edu.au

Enquiries about reprinting information contained in this publication
should be made through:

Melbourne Social Equity Institute
University of Melbourne, 3010
Victoria, Australia
social-equity@unimelb.edu.au

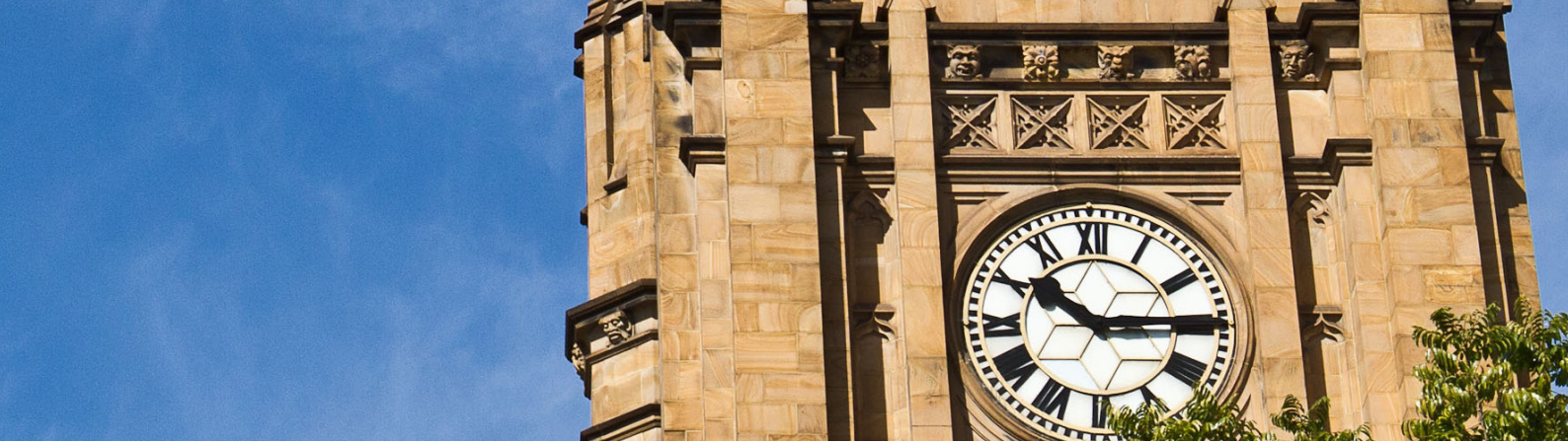
Letter from the Director	4
About the Melbourne Social Equity Institute	8
Reference Group	10
Advisory Board	11
Research	
Programs and Leaders	12
Projects	16
Externally-funded Research	18
Visiting Fellows	19
Community Fellows Program	20
Housing and Sustainable Urban Development	22
Partnerships	23
Disability Research Initiative	24
Postgraduate Students	26
Doctoral Academy	30
Publication Highlights	32
Engagement	
Media Highlights	33
Disability, Human Rights and Social Equity Conference	35
Public Events	36
Lecture Series for Asylum Seekers	37
Financial Statement	38

Letter from the Director

The Melbourne Social Equity Institute (MSEI) entered its fourth year of operation in 2016. In February, MSEI and Arts Access co-hosted a successful cultural and arts event featuring performers and artists with disabilities at the Australian Centre for the Moving Image. This was followed by MSEI's second biennial conference which had the theme, Disability, Human Rights and Social Equity. Keynote speakers, Charlotte V McClain-Nhlapo, the Global Disability Advisor for the World Bank Group, and Emeritus Professor Ron McCallum AO, the former Chair of the United Nations Committee on the Rights of Persons with Disabilities, set the international context for two days of plenary and concurrent sessions. The conference focused on how best to develop and support interdisciplinary research projects in partnership with people with disabilities that address the social, economic and physical environments which currently prevent social equity for persons with disabilities.

Hosting this conference highlighted some of the challenges to ensuring that the University of Melbourne is fully accessible for persons with disabilities. The federal government awarded MSEI funding to help with accessibility issues including the use of Auslan interpreters and closed circuit captioning along with pre-existing hearing loops. Even with this support, accessibility remained a challenge and thus the keynote speeches and summaries of the presentations were disseminated to a broad audience via social media. Led by MSEI's then Communications and Events officer, Gary Dickson, this proved a remarkably successful strategy. Using the hashtag #socialequity16, there were 3,883 tweets about the conference leading to 7,838,661 'impressions' which refers to how many times these tweets were seen around the globe. A conference blog hosted by the University's communications website Pursuit included a piece written by Professor Anne Kavanagh which reached over 47,000 people within a couple of weeks.

Throughout 2016, members of the MSEI Directorate, Reference Group and Advisory Board worked hard to update MSEI's research strategy in line with recommendations from the 2015 review of MSEI's first three years in operation.



Four programs of research emerged from previous themes. These programs supported research on issues relating to Housing and Sustainable Development (led by Professor Carolyn Whitzman), Refugees and Asylum Seekers (led by Professor John Tobin and Associate Professor Sara Wills); Poverty and Income Inequality (led by Professor Shelley Mallett) and Community-Engaged Research (led by Associate Professor Deborah Warr) being threaded throughout the vast majority of projects supported.

After three years of unchanged personnel at the helm, MSEI sadly farewelled Communications and Events Officer, Gary Dickson, as he left to work and travel in Europe. Gary did a wonderful job particularly in developing MSEI's podcast series, website and social media presence and we wish him all the best for his future career. Professor Carolyn Whitzman decided to step down from her role as a program leader at the end of the year due to her multiple other commitments. Carolyn has been a stalwart supporter of MSEI from the very beginning and her energy and drive are already sorely missed.

In relation to building research capacity, MSEI was associated with two successful applications for Centres of Research Excellence funded by the National Health and Medical Research Council. Professor Anne Kavanagh and nine other researchers were awarded funding for a Centre of Research Excellence in Disability and Health. Professors Kelsey Hegarty and Cathy Humphreys who co-lead the Melbourne Alliance to End Violence Against Women and their Children, together with Professor Stephanie Brown from the Murdoch Childrens Research Institute, were also awarded funding for a Centre of Research Excellence to Promote Safer Families. These two Centres of Research Excellence will be integral in providing support for collaborative health-related research that will be of significant benefit for those with lived experience of disability and/or intimate partner violence.

In relation to international links, MSEI formed an association with the Institute for the Study of Superdiversity (IRiS) at the University of Birmingham. I visited Birmingham in July to help set the ball rolling for a joint conference to be held in September 2017 on research co-production with communities and to work on a joint application for international research funding. I also visited the University of California, Berkeley in October to meet with colleagues working in the areas of disability and mental health and to visit the Haas Institute for a Fair and Inclusive Society. Closer to home, MSEI set up links with the Institute for the Study of Social Change at the University of Tasmania and is currently exploring a number of collaborative projects and events.

It is pleasing to note that the University of Melbourne was successful in 2016 in receiving substantial funding from the Atlantic Philanthropies Foundation to lead the Atlantic Fellows for Social Equity program. Starting in October 2017, up to 25 fellowships will be awarded annually for the next 20 years, to develop around 500 “social change agents” who will be tackling social disadvantage in Australia, New Zealand and the Pacific. This program will be the sixth in what is a global network of leadership development programs.

Finally, a big thank you goes to MSEI’s Deputy Director, Professor Julie McLeod, Executive Officer, Charlene Edwards and Project Co-ordinator, Kathleen Patterson for their invaluable support and enthusiasm throughout the year. I would also like to extend a warm welcome to our new Communications, Marketing and Events Officer, Claire Smiddy, who joined the team in the latter part of 2016. Claire has already hit the ground running and it’s great to have her on board.

I hope you enjoy reading about our endeavours throughout 2016 and look forward to MSEI continuing its support for interdisciplinary research aimed at ameliorating disadvantage throughout 2017 and beyond.

A handwritten signature in black ink that reads "Bernadette McSherry". The script is fluid and cursive, with the first name being more prominent.

Professor Bernadette McSherry
Foundation Director



▲ The Melbourne Social Equity Institute Directorate Staff 2016
(L to R) Kathleen Patterson, Professor Julie McLeod, Professor Bernadette McSherry,
Gary Dickson and Charlene Edwards. Picture: Timothy Burgess

About the Melbourne Social Equity Institute

At the Melbourne Social Equity Institute, we acknowledge an imperfect world. We realise that societies are sometimes beset by divisions of culture, economic status or creed. Chances of birth such as class, race, ability, gender or sexuality often lead to marginalisation and disempowerment. We strive to identify and challenge the origins of disadvantage and develop effective solutions through high-end research and active community engagement. Our vision is to influence government policy, public opinion and social practices through the highest quality scholarship in order to create fairer societies.

Research is currently focused on Refugees and Asylum Seekers, Poverty and Income Inequality and Community-Engaged Research. MSEI also auspices the Melbourne Research Alliance to End Violence against women and their children (MAEVe). Intersecting with each of these research programs are the lived experiences of disadvantage, such as people with disabilities, Indigenous people, children, LGBTQIA, people seeking asylum, women and older people.

MSEI favours co-designing research in partnership with members of communities, service providers, governments and other organisations at every stage of a project. This approach gives a better understanding of the needs of individuals experiencing disadvantage and how best to develop methods for addressing those needs.

MSEI is staffed by a small directorate the members of which co-ordinate research and engagement activities. In 2016 members of the directorate were:

Professor Bernadette McSherry
Foundation Director

Professor Julie McLeod
Deputy Director

Charlene Edwards
Executive Officer

Kathleen Patterson
Project Co-ordinator

Gary Dickson
Marketing, Communications and Events Officer (January – October)

Claire Smiddy
Marketing, Communications and Events Officer (November – December)

Welcome



Wominjeka

We acknowledge and pay respect to the Wurundjeri people, the Traditional Owners of this land.

Bienvenidos

환영합니다





Reference Group

The reference group is comprised of academics with demonstrated strengths in social equity research from across the University. Members of the group act as champions of MSEI and its research as well as providing input on matters of management and strategic focus. Professor Bernadette McSherry is the chair.

As well as the directorate and program leaders, the following researchers made up the 2016 reference group:

Associate Professor Helen Dickinson, School of Social and Political Sciences

Associate Professor John Furler, Faculty of Medicine, Dentistry and Health Sciences

Professor Louise Harms, Department of Social Work

Professor Guyonne Kalb, Melbourne Institute of Applied Economic and Social Research

Professor Susan Kneebone, Melbourne Law School

Professor Fazal Rizvi, Melbourne Graduate School of Education

Professor Katrina Skewes-McFerran, Melbourne Conservatorium of Music

Professor Ian Williamson, Melbourne Business School



Advisory Board

The advisory board is made up of leaders in the business and community sectors and provides strategic guidance to ensure that research supported by MSEI is relevant to and aligned with important, contemporary social issues. The advisory board also increases MSEI's opportunities to disseminate research and to engage with like-minded organisations with the aim of making societies fairer.

The advisory board is made up of:

Jan Owen AM (Chair), CEO, Foundation for Young Australians

Durkhanai Ayubi, Restaurateur, Assistant Editor, Sultana's Dream and former Senior Policy Analyst, Australian Communications and Media Authority

Robin Banks, Anti-Discrimination Commissioner, Equal Opportunity Tasmania

Michael Black AC QC, former Chief Justice of the Federal Court of Australia

Hugh Evans, Co-founder and CEO, Global Poverty Project

Roz Hansen, former Chair, Ministerial Advisory Committee for the Metropolitan Planning Strategy

Ross Honeywill, Executive Director, Centre for Social Economics

Michael Traill AM, Executive Director, Social Ventures Australia

Thank you to all of our Reference Group and Advisory Board members for their advice and support throughout 2016.



Research Programs

Community-Engaged Research

Led by Associate Professor Deborah Warr

Through all MSEI research programs there is a commitment to community-led and community-engaged research. The key feature of community-engaged research is a high level of community decision-making about the purpose, design, conduct and use of research. It moves beyond seeing members of communities as research 'subjects' to enabling them to drive the research agendas that concern them.

Past and current community-engaged research projects supported by MSEI include the Understanding Female Genital Cutting in Inner Melbourne project, the Unfitness to Plead project and Choice, Control and the NDIS which was co-funded by the Disability Research Initiative.

Poverty and Income Inequality

Led by Professor Shelley Mallett

Poverty and income inequality are complex issues. Living in poverty often involves missing out on resources or opportunities which are available to others, leading to social exclusion. Income inequality refers to the extent to which income is distributed in an uneven manner among a population. In many countries, the gap between the rich and everyone else has been growing markedly and women's earnings remain lower than men's.

This research program is developed in conjunction with the Brotherhood of St Laurence and focuses on factors leading to poverty and income inequality and what policy can do to address these specific causes.

It draws on work already taking place in the Melbourne Institute of Applied Economic and Social Research and the Melbourne School of Government to form new and broader collaborations across the University.



Refugees and Asylum Seekers: Resettlement and Integration

Led by Professor John Tobin and Associate Professor Sara Wills

The aim of this research program is to co-ordinate and support interdisciplinary research on issues relating primarily to the resettlement and social integration of refugees and asylum seekers. Resettlement generally refers to the transfer of refugees from an asylum country to another state that has agreed to admit them and ultimately grant them permanent settlement. Only a small number of states, including the United States, Canada, Australia and the Nordic countries, participate in the United Nations High Commissioner for Refugees' Resettlement Program. Because there are often language and cultural challenges for those resettled to another country, services and programs are needed to facilitate integration. Such services and programs may deal with cultural orientation, language and vocational training, and help provide access to education and employment.

This program draws together a number of researchers working in this field, including those involved with the University's Researchers for Asylum Seekers network and the Melbourne Refugee Studies Program to examine which programs and services best assist with the social integration of refugees both in Australia and in the Asia-Pacific region.

Supported research projects include:

- Supporting refugee-background students
- Public attitudes towards asylum seekers and refugees
- Refugee-background children in Australia
- The needs of recently arrived refugees and asylum seekers
- Inclusion for refugees through sports participation
- Migrant women in care work.

Melbourne Research Alliance to End Violence Against Women and Their Children

Led by Professor Kelsey Hegarty and Professor Cathy Humphreys

The Melbourne Research Alliance to End Violence against women and their children (MAEVe) was established in 2015 to draw together research and evaluation capacity across the University, in partnership with community, industry and government agencies, to respond to this pressing challenge. MAEVe strives to make a difference to the lives of women, families and communities by addressing and preventing violence against women through interdisciplinary and intra-institutional collaboration.

MAEVe is led by Professor Kelsey Hegarty (General Practice) and Professor Cathy Humphreys (Social Work), under the auspices of MSEI. Dr Kate O'Halloran, a researcher and journalist with an interest in LGBTIQ issues, gender equity and the primary prevention of violence against women, was appointed in the second half of 2016 as MAEVe Academic Convenor, taking over from Violeta Politoff.

The MAEVe steering committee includes academics from across the University and MAEVe members have been actively contributing to research, policy, and the public conversation around violence against women and their children. MAEVe also hosts a fortnightly seminar series on key, emerging issues relating to violence against women.

In 2016, MAEVe academics Kelsey Hegarty, Stephanie Brown and Cathy Humphreys were successful in obtaining funding for a Centre of Research Excellence from the National Health and Medical Research Council (NHMRC) to promote Safer Families: Tailoring Early Identification and Novel Interventions for Intimate Partner Violence. This is the first CRE grant dedicated to research into the significant health effects of intimate partner violence on individuals and families, and the health sector responses that are needed to improve the safety, health and well-being of families.

MAEVe has ensured that the voices of women and children survivors of violence remain at the forefront of our research agenda. With funding from MSEI, MAEVe has established and will evaluate a panel entitled 'WEAVERS' or Women (and their children) who have Experienced Abuse and Violence: Researchers and advisors'. The aim of the panel is for survivors to co-design and advise on the research and content of MAEVe-affiliated projects.

www.maeve.unimelb.edu.au

► Artwork by Gav Barbey, a Melbourne-based artist.





Research Projects

In 2016 MSEI seed-funded six new interdisciplinary research projects.

Listening for (a) change: Identifying strategies for preventing family violence through dialogical research with women with refugee backgrounds

Co-funded by MAEVe and the DRI

Dr Cathy Vaughan, Dr Karen Block, Erin Davis and A/Prof Deborah Warr, Faculty of Medicine, Dentistry and Health Sciences

Dr Odette Kelada and Dr Ana Dragojlovic, Faculty of Arts

Dr Adele Murdolo, Dr Regina Quiazon and Dr Jasmin Chen, Multicultural Centre for Women's Health

Joumanah El Matra, Australian Muslim Women's Centre for Human Rights

Count me in: Promoting well being and inclusion through sports participation for migrant and refugee background young people

Dr Karen Block, Dana Young and A/Prof Lisa Gibbs, Faculty of Medicine, Dentistry and Health Sciences

A/Prof John Quay, Melbourne Graduate School of Education

The role of ethical fashion in preventing violence against women in Bangladesh

Co-funded with MAEVe and the DRI

Dr Rimi Khan, Faculty of Arts

Alex Devine, Faculty of Medicine, Dentistry and Health Sciences

Dr Ben Neville, Faculty of Business and Economics

Prof Firdous Azim, BRAC University, Bangladesh

The effect of title transfers on housing quality and tenant outcomes

Prof David Ribar, Faculty of Business and Economics

Dr Ilan Wiesel, Faculty of Science

Contested waterfronts: Informality, floods and capital in Indonesian cities

Prof Kim Dovey, Dr Amanda Achmadi and Prof Ross King, Melbourne School of Design

Dr Brian Cook, Faculty of Science

Exploring the feasibility and impact of a lived experience advisory panel in the area of violence against women and their children

Prof Kelsey Hegarty, Dr Laura Tarzia, A/Prof Deb Warr, Dr Cathy Vaughan and Dr Kate O'Halloran, Faculty of Medicine, Dentistry and Health Sciences

Charlene Edwards, Melbourne Social Equity Institute



Externally-funded Projects

Model laws to regulate the use of restraint on persons with disabilities

Led by Professor Bernadette McSherry, Melbourne Social Equity Institute, with Professor Lisa Waddington (Maastricht University, The Netherlands) and Professor Peter Bartlett (University of Nottingham, United Kingdom).

This Australian Research Council Discover project aims to address the current lack of a common legal framework for regulating the use of physical, mechanical and chemical restraint on persons with disabilities in mental health, disability and aged care sectors. Through developing model laws and guidelines, this project aims to support the Disability Ministers' National Framework for Reducing and Eliminating the Use of Restrictive Practices and the National Mental Health Commission's work on reducing and eliminating restraint. Its main objective is to benefit persons with disabilities by supporting government policies aimed at reducing, with a view to eliminating, the adverse consequences of coercive practices in general.

Unfitness to plead and indefinite detention of persons with cognitive impairments: Addressing the legal barriers and creating appropriate alternative supports in the community

Led by Professor Bernadette McSherry, Melbourne Social Equity Institute, and Dr Anna Arstein-Kerslake, Melbourne Law School, with the University of New South Wales, Onemda VicHealth Koori Health Group, North Australian Aboriginal Justice Agency, Intellectual Disability Rights Service, Victorian Aboriginal Legal Service

The aim of this project is to develop practical and legal solutions to the problem of people with cognitive disabilities, including Indigenous people with cognitive disabilities, being found "unfit to plead" and subjected to indefinite detention in Australia. It was funded by the Australian Government's Department of Social Services, via the New South Wales Government's Department of Family and Community Services.



Visiting Fellows

Charlotte McC Lain-Nhlapo
Global Disability Advisor, World Bank Group

Professor Eimear Muir-Cochrane
Chair of Nursing (Mental Health), Flinders University and Adjunct Professor at
University of South Australia

Graeme Innes AM
Australian company director, lawyer and public speaker, former Australian
Disability Discrimination Commissioner and Human Rights Commissioner

Professor Mary Crock
Professor of Public Law, The University of Sydney

Dr Rajan Darjee
Forensic Psychiatrist, Forensic Network, NHS Scotland

Emeritus Professor Ron McCallum AO
The University of Sydney

Rosemary Kayess
Director, Human Rights and Disability Project of the Australian Human Rights
Centre at the Faculty of Law, University of New South Wales

Professor Steven Segal
School of Social Welfare, University of California Berkeley

Community Fellows Program

In 2016 MSEI established the Community Fellows Program. The program aims to meet the research needs of community organisations to conduct research-related projects in collaboration with university-based researchers. Through the Community Fellows Program, MSEI aims to support research that will lead to positive outcomes such as improved service delivery, the development of new services, the improved ability to advocate effectively or the improved capacity to undertake future research projects.

The initiative is targeted at small to medium-sized community-based organisations that currently have very limited capacity to conduct research. Key objectives for the Community Fellows Program are to generate quality research outcomes, meet community-based needs for research and to foster community–academic collaborations.

In 2016, each Community Fellow was assigned an Academic Supervisor with relevant expertise. The Academic Supervisor and MSEI worked with the Fellow to design the project. During their placement, Community Fellows were encouraged to participate in a range of academic and professional development activities.

During the 2016 pilot program, there were six Community Fellowships:

A Trauma Informed Approach to Education

Organisation: Carlton Primary School

Community Fellow: Bec Harris

Academic Supervisor: Greg Donoghue (Melbourne Graduate School of Education)

Final Project Report on Research into Issues of Migrant Employment

Organisation: Western Community Legal Centre

Community Fellow: Catherine Hemingway

Academic Supervisor: Assoc Prof Joo-Cheong Tham (Melbourne Law School)



Skills For Life Community Program Review

Organisation: Carlton Football Community Fund

Community Fellow: Shawn Wilkey

Academic Supervisor: Dr Karen Block (Melbourne School of Population and Global Health)

Performing Arts Programs in Juvenile Justice in Victoria 2005–2015

Mapping Policy, Research and Programs

Organisation: ILBIJERRI Aboriginal and Torres Strait Islander Theatre Company

Community Fellow: Kamarra Bell-Wykes

Academic Supervisor: Dr Sophie Rudolph (Melbourne Graduate School of Education)

Evaluation Framework for Space2b, a Design-Based Social Enterprise for Unemployed Women who are Refugees or Asylum-Seekers

Organisation: Space2b

Community Fellows: Aila Joodi and Ondine Spitzer

Academic Supervisor: Dr Ben Neville (Melbourne Business School) and Dr Richard Williams (Melbourne School of Population and Global Health)

Identifying Employment Barriers for Tertiary-educated Muslim Australian Women

Organisation: Women's Health West

Community Fellow: Susan Timmins

Academic Supervisor: Dr Richard Williams (Melbourne School of Population and Global Health)



Housing and Sustainable Urban Development

Housing and Sustainable Urban Development (originally known as 'Access to Public Goods' and later, 'Place Matters') arose out of MSEI's original research themes. It focused on the ways in which individual and community wellbeing can be created by ensuring equitable access to affordable housing, employment, transport, education, open space and more.

This research theme was led by Prof Carolyn Whitzman, an urban planner in the Faculty of Architecture, Building and Planning. Prof Whitzman's passion for this area began as an affordable housing activist in Montreal in the 1990s. Under Prof Whitzman's expert leadership, this research program supported a number of very successful research projects including two important interdisciplinary research projects in 2016. The first, led by Prof David Ribar (Faculty of Business and Economics) and Dr Ilan Wiesel (Faculty of Science), investigates whether the devolution of ownership of housing assets from the government to a private Aboriginal community organisation improves the quality of those assets and leads to better tenant outcomes. The second project led by Prof Kim Dovey, Dr Amanda Achmadi, Prof Ross King (Melbourne School of Design) and Dr Brian Cook (Faculty of Science) looks at the contested development of rivers in Indonesian cities.

In October 2016, MSEI and Place Matters, together with the Melbourne Sustainable Societies Institute, supported a delegation attending Habitat III, the third United Nations Summit on the future of cities and human settlements. At this event with over 35,000 delegates, the University of Melbourne team was the only university team to address the plenary with global representatives from 150 countries.

The formal Housing and Sustainable Urban Development research program concluded in 2016. Prof Whitzman is concentrating her efforts on Transforming Housing: Affordable Housing for All, a substantial project focused on influencing and supporting the transformation of the housing policy and delivery environment in Victoria. MSEI will continue to support the work of Prof Whitzman and other researchers working in this area.



Partnerships

The MSEI is committed to working in collaboration with like-minded organisations and individuals with lived experience to ensure that research is relevant and impactful.

The MSEI works closely with Scope Australia, a leading provider of disability services. Jointly, the partners strive to improve the lives of individuals with disabilities through research and programs that empower them. In 2016, the partners welcomed Prof Keith McVilly as the Chair of Disability and Inclusion, a shared position between Scope Australia and the Faculty of Arts at the University of Melbourne.

The Institute continues to be represented on the University partnership steering committees of the Brotherhood of St Laurence and the Department of Health and Human Services (North). Prof Julie McLeod, Deputy Director of MSEI, also chairs the University's partnership with The Smith Family.

In December, MSEI partnered with the Brotherhood of St Laurence and the Australian Sociological Association to present a booked out one-day forum on inclusive work and economic security for refugees and people seeking asylum.

The Community Fellows Program has provided a key mechanism for supporting small to medium-sized organisations to access academic expertise for the benefit of their organisation and the communities that they serve. Fellows came from organisations such as WestJustice Legal Centre and Carlton Primary School.

Alongside formal partnerships, MSEI has informal relationships with a number of organisations. The Red Cross was a close collaborator in the development of the lecture series for asylum seekers throughout 2016. The input of Red Cross members was essential in refining the lecture program and attracting participants.

Disability Research Initiative

In 2013 a cross-University forum was held by MSEI to understand the scope of rights and social model-based disability research underway and the best way to support that work. The result was the establishment of the Disability Research Initiative (DRI) in 2014. Dr Anna Arstein-Kerslake (Melbourne Law School) was appointed its Academic Convenor. Throughout 2016, the DRI was led by Professor Keith McVilly (School of Social and Political Sciences).

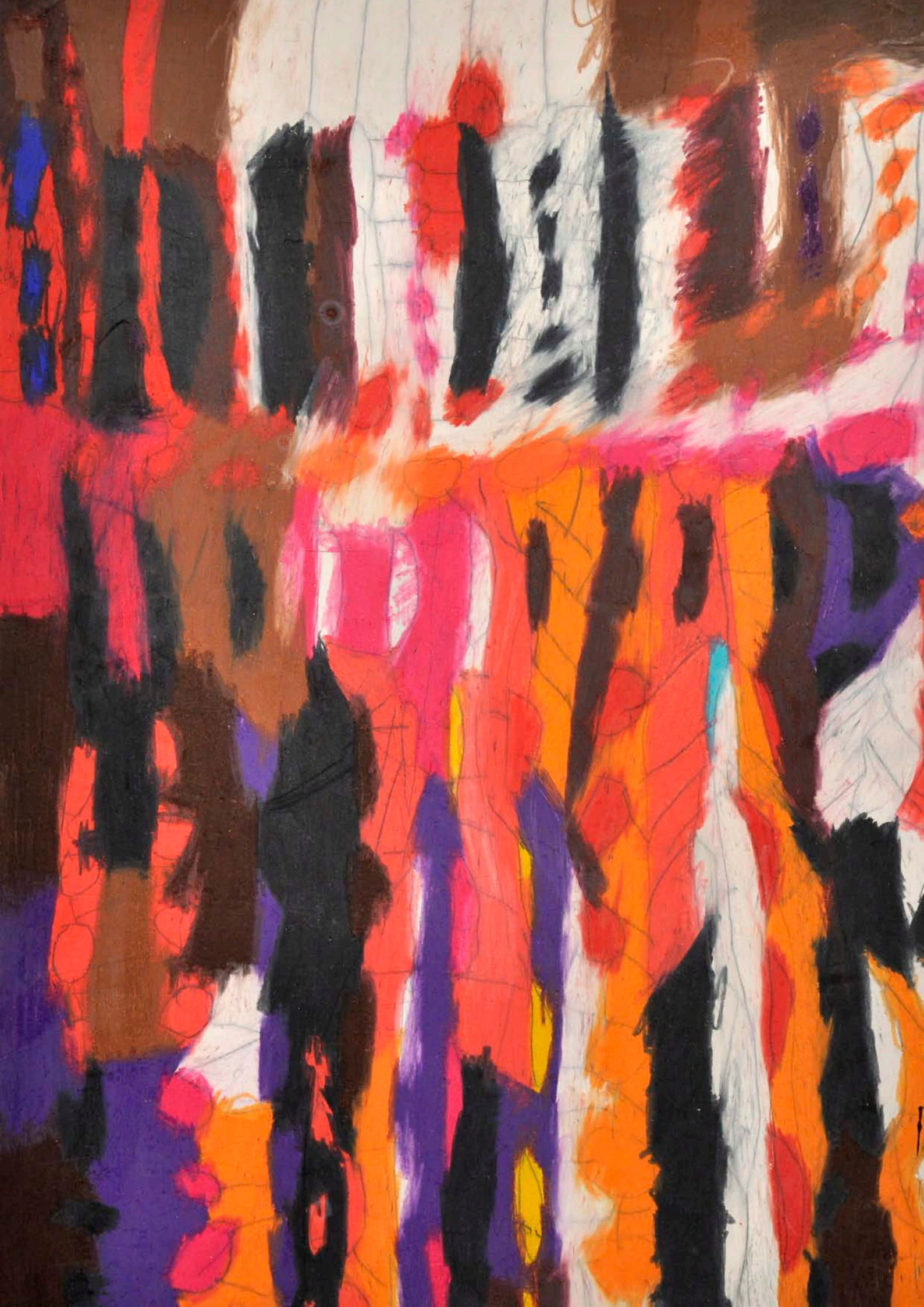
The DRI's aim is to help co-ordinate interdisciplinary projects with the involvement of community partners and those with lived experience of disability. It develops high-quality applied research, policy and education programs. For example, the Disability Human Rights Clinic at Melbourne Law School developed as one of its first projects. Using human rights law and disability studies, law students analyse and act on threats to the human rights of persons with disabilities. Students acquire the skillset to become the next generation of disability rights advocates.

In 2016, the DRI and MSEI co-hosted several well-attended international and local events, authored public submissions and instigated important external partnerships. Public events co-hosted included a public debate on whether to cure or accommodate disability, a seminar on access to justice for people with disability in Australia, and a lecture and panel discussion on community treatment orders for people with psychosocial disability.

In 2016, the MSEI and the DRI also launched the national Disability Access to Justice Consortium. The Consortium brings together researchers from the University of Melbourne and other universities in Australia and New Zealand to foster collaboration with key community and government organisations.

www.disabilityresearch.unimelb.edu.au

► Not titled, George Aristovoulou, 2014. Courtesy of the artist and Arts Project Australia. Arts Project Australia is a studio and gallery supporting artists with an intellectual disability as they develop their art practice





Postgraduate Students

Aviva Beecher-Kelk

Sustainability vs Profitability: Locating Stakeholders of Australian Disability Services in the Individual Support Package Model

Prof Lynette Joubert, Department of Social Work and A/Prof Helen Dickinson, Melbourne School of Government

Jasmine Dawson

From the Convention to the Courts: Sexual Orientation-based Refugee Law in Australia

Prof Michelle Foster, Melbourne Law School and A/Prof Sarah Maddison, School of Social and Political Sciences

Liz Gill-Atkinson

How Do Women with Disability in the Philippines Understand and Experience Participatory Research Practice?

Dr Cathy Vaughan, Gender and Women's Health Unit and Prof Marilys Guillemin, Centre for Health Equity

Kelly Hutchinson

Social Impact of Technology: Digital Social Innovation in Australia

Prof Helen Sullivan and Dr Sarah Bice, Melbourne School of Government

Lauren Kosta

Parenting after a Disaster: Experiences since Black Saturday

Prof Louise Harms, Department of Social Work, A/Prof Lisa Gibbs, Melbourne School of Population and Global Health and Dr David Rose, Department of Social Work

Katie Lamb

Embedding the Voices of Children and Young People in the Development of Programs for Violent Fathers

Prof Cathy Humphreys, Department of Social Work



Kelvin Lau

Understanding Emotional Distress and Help-seeking in Young People from a Migrant Background in Australia Using Photo-elicitation Interviews

Dr Victoria Palmer, General Practice

Samantha Mannix

Gender Equity, Social Transformations and Education

Prof Julie McLeod, Melbourne Graduate School of Education

Erika Martino

Transforming Housing; Affordable Housing for All

Professor Carolyn Whitzman, Melbourne School of Design

Gemma McKibbin

Sexually Abusive Behaviour by Young People: Supporting Victoria's Prevention Response *(completed in 2016)*

Prof Cathy Humphreys, Department of Social Work and Dr Bridget Hamilton, School of Nursing

Melissa Murphy

Linking in and Grooving Out: The Use of Music to Address Social Connectedness for Young People with Disability Transitioning Between School and Adult Services

Prof Katrina Skewes-McFerran, National Music Therapy Research Unit and Dr Nick Hagiliassis, Scope Victoria

Carol O'Dwyer

The Gender Sensitive Care Project

Prof Kelsey Hegarty and Dr Laura Tarzia, Department of General Practice, and Dr Sabin Fernbacher, North West Mental Health.

Naomi Pfitzner

Engaging New Fathers: Learning from Baby Makes 3

Prof Kelsey Hegarty, Department of General Practice and Prof Cathy Humphreys, Department of Social Work

Alana Roy

Mental Health and Wellbeing of People Who Are Deaf-Blind

Prof Keith McVilly, Disability Research Initiative and School of Social and Political Sciences

Juan Tellez

Model Laws and Guidelines to Regulate the Use of Chemical Restraint on Persons with Disabilities

Prof Bernadette McSherry, Melbourne Social Equity Institute, Prof John Tobin, Melbourne Law School and Dr Lisa Brophy, Melbourne School of Population and Global Health

Amita Tuteja

Reproductive Health and Contraceptive Needs of Migrants from Burma: Practitioner and Patient Perspectives in the Australian Context

A/Prof Meredith Temple-Smith, General Practice; A/Prof Lena Sanci, General Practice and Dr Lester Mascarenhas, General Practice

Alicia Yon

Enabling Sociospatial Justice: An Integrated Local Planning Approach to Addressing the Disability-gender Violence Nexus

Prof Carolyn Whitzman, Faculty of Architecture, Building and Planning and Dr Cathy Vaughan, Gender and Women's Health Unit

JOURNEYS ARE
YOURS BEGINS TODAY
Create your own collisions at unimelb.edu.au



NO TWO JOURNEYS ARE THE SAME.
YOURS BEGINS TODAY.

Create your own collisions at unimelb.edu.au



THE UNIVERSITY OF
MELBOURNE



Doctoral Academy

Throughout 2016 the MSEI continued to support doctoral students at the University working on issues of social equity through its doctoral academy. Participants come from across the University and are supported through peer-learning, mentoring from experienced academics and sessions on skill development including writing for media and working in partnership with community organisations.

The 2016 cohort found a common interest in the ethics of conducting research and are working on a collection of essays exploring this topic.

The members of the 2016 Doctoral Academy were:

Zoe Aitken

How Does Acquiring a Disability in Adulthood Affect People's Mental Health?

Tamara Borovica

Becomings of Moving Bodies: Young Women, Bodies and Affect

Tania Cañas

Theatre of the Oppressed and Conscientisation

Angeline Ferdinand

Transferring International Models of Aboriginal-centred Health Care to Australian Settings

Anna Dabrowski

Imagining Global Citizenship: Policy, Curricula and the Role of the Teacher

Rebecca Fairchild

Collaborating with Children in the Homelessness and Family Violence Context to Understand the Significance of Music in Their Everyday Lives

Sarah Green

A Safe and Necessary Coherence: The Experiences of Bosnian Child Refugees in Australia



Thea Hewitt

Locating the City of Refuge: Institutional Support for Humanitarian Migrants in Melbourne, Australia

Kelly Hutchinson

Social Impact of Technology: Digital Social Innovation in Australia

Hesam Kamalipour

Urban Informalogy: The Morphologies and Incremental Transformations of Informal Settlements

Lauren Kosta

Parenting after a Disaster: Experiences since Black Saturday

Ingrid Landau

Contextualising or Constructing Compliance? The Rise of Human Rights Due Diligence and Its Implications for the Protection of Workers' Rights in the Global Economy

Matthew Mabefam

Witchcraft and Development in Africa: A Case Study of Northern Ghana

Frankline A. Ndi

Land Grabbing and Community Resettlement Within the Context of Development Projects in South West Cameroon

Renee Miller-Yeaman

Home, Hospitality and Confinement: The Villawood Immigration Detention Centre and Migrant Hostel

Emily Porter

Youth Labour Market Transitions During the Great Recession: Assessing the Role of Institutions

Amita Tuteja

Understanding the Needs of Migrants from Burma: Reproductive Health and Contraception in the Australian Health Care Context



Publication Highlights

The MSEI and its affiliated researchers produced 59 publications in 2016. A select few are highlighted below.

Tham, J., Campbell, I. and Boese, M. "Why is Labour Protection for Temporary Migrant Workers so Fraught? A Perspective from Australia" in Howe, J. and Owens, R. (eds.) *Temporary Labour Migration in the Global Era: The Regulatory Challenges* (London: Hart Publishing, 2016)

Vaughan, C. and Warr, D. "Different Lenses: Navigating Ethics in Cross-cultural Research Using Photovoice" in Cox, S., Guillemin, M. and Waycott, J. (eds.) *Ethics and Visual Research Methods: Theory, Methodology, and Practice* (London: Palgrave Macmillan, 2016)

Tarzia, L., Murray, E., Humphreys, C., Glass, N., Taft, A., Valpied, J. and Hegarty, K. (2016). "I-DECIDE: An Online Intervention Drawing on the Psychosocial Readiness Model for Women Experiencing Domestic Violence." *Women's Health Issues*, 26(2), 208-16

McSherry, B. and Tellez, J.J. (2016). "Current Challenges for the Regulation of Chemical Restraint in Healthcare Settings." *Journal of Law and Medicine*, 24, 15-19

Hegarty, K., Forsdike, K., Tarzia, L., Vlasis, R. and Schweitzer, R. (2016). "Identifying and Responding to Men Who Use Violence in Their Intimate Relationships." *Australian Family Physician*, 45(4), 176-181

Muller, D. (2016). *'Islamisation' and Other Anxieties: Voter Attitudes to Asylum Seekers*. Melbourne: University of Melbourne

Gooding, P., Arstein-Kerslake, A., Andrew, L. and McSherry, B. (2016). *Submission to the Australian Senate Committee for Community Affairs on the Inquiry into the Indefinite Detention of People with Cognitive Disability*



Media Highlights

The MSEI counted 65 media mentions in 2016 across a range of formats including print (26), online (18) and radio (16). A select few are highlighted below.

“Warning on restraint tactics in mental health care”, Bernadette McSherry on ABC Radio, Tuesday 5 January.

“There has been an increase for domestic violence services over the festive season”, Cathy Humphreys on ABC News 24, Wednesday 6 January.

“Will the NDIS and individualisation of disability services enhance human rights?” Helen Dickinson for *Right Now*, Monday 22 February.

“Some voters believe asylum seekers get \$10,000 and Nike shoes”, Denis Muller for the *Sydney Morning Herald*, Thursday 10 March.

“LGBTI Rights in Myanmar”, Jasmine Dawson for the *Star Observer*, Saturday 30 April.

“Stepping up to the challenge of domestic violence”, Kelsey Hegarty for *Pursuit*, Monday 27 June.

“Habitat III: the biggest conference you’ve probably never heard of”, Hesam Kamalipour for *The Conversation*, Monday 5 September.

“Suspects with cognitive impairment advised by inmates to plead guilty”, Piers Gooding in *The Guardian*, Tuesday 25 October.

“Call for compulsory porn literacy lessons for children as young as eight”, Gemma McKibbin on ABC Radio, Thursday 24 November.

“Emerging voices: Family violence in immigrant and refugee communities”, Cathy Vaughan for *Pursuit*, Wednesday 7 December.



Disability, Human Rights and Social Equity Conference

MSEI's second conference, Disability, Human Rights and Social Equity, was held in February 2016. This international event brought together over 200 academics, policy makers, community-sector professionals and people with lived experience of disability.

The conference encouraged researchers from a range of disciplines to engage with persons with disabilities and disabled persons' organisations in order to develop, in the words of the National Disability Research and Development Agenda, "research which focuses on human rights, participation in community life, access to mainstream activities and services, and broader systems change".

In addition to the organising committee led by Professor Bernadette McSherry, a separate program committee was established with persons with disabilities taking a lead role in peer-reviewing abstracts and formulating the conference program. A small amount of Federal Government funding was secured to assist with accessibility issues including the use of Auslan interpreters and closed circuit captioning.

The conference began with an opening night cultural and arts event held at the Australian Centre for the Moving Image at Federation Square and sponsored by the City of Melbourne. The event featured Weave Movement Theatre, singer/songwriter Eddie Ink, Deaf poet Walter Kadiki and performance drawer Zhen Chew. Conference delegates were welcomed by Susan Riley, Deputy Lord Mayor of Melbourne and Professor Glyn Davis AO, Vice-Chancellor of the University of Melbourne. Graeme Innes AM, Chair of Attitude Foundation and former Australian Disability Discrimination Commissioner, officially launched the conference.

Over the two-day conference a range of keynote, plenary, concurrent and poster sessions provided opportunities for reflecting on and discussing how best to develop and support research that focuses on changing the social, economic and physical environments that currently prevent social equity for persons with disabilities.

The conference was sponsored by the Australian Government Department of Social Services, the Disability Research Initiative, the Institute for International Law and the Humanities and Mind Australia.

◀ Poet Walter Kadiki performing at the opening cultural event for the Disability, Human Rights and Society Equity Conference in February. Picture: Paul Dunn



Public Events

MSEI hosted and supported over 50 events across 2016, showcasing the breadth of the institute's research interests.


Following the successful start to 2016 with the Disability, Human Rights and Social Equity Conference, MSEI continued the year by joining with MAEVe and the Melbourne Networked Society Institute in February to present a public event on the potential of new and emerging technologies in the area of preventing violence against women. The event considered technology's potential as a tool to help women seek safety, challenge and change gender attitudes, as well as its potential for harm.

In May, MSEI hosted a forum focused on the Australian Labor Party's agenda for tackling inequality. Attended by The Hon. Jenny Macklin, MP, the event provided the opportunity for panelists and attendees from across the University of Melbourne to discuss the need to develop strong economic and social policies, to help Australians to balance work, care and family and to support young and old Australians in the workforce.

In June, MSEI partnered with the Melbourne Law School and Oxfam to host a public lecture by Philip Alston, UN Special Rapporteur on Extreme Poverty and Human Rights and Professor of Law at New York University. In his lecture titled "What's poverty got to do with human rights?", Professor Alston argued that by not dealing with poverty, human rights groups reinforce the status quo.

In August, Karyn Thomas, co-founder of Small Projects Istanbul, presented a seminar on helping those displaced by war in Syria. Small Projects Istanbul works with some of the estimated 360,000 people displaced by war who have made their way to Turkey's largest city and has a strong focus on education.

In November, over 200 people gathered at the State Library of Victoria for a panel debating the issue of whether scarce government resources should be directed towards finding cures for disabilities or making reasonable accommodations. The event was moderated by ABC broadcaster Jon Faine and co-hosted with the Melbourne Neuroscience Institute.



Also in November, Professor Steven Segal from the University of California, Berkeley, delivered a booked-out lecture on compulsory mental health treatment in the community. This was followed by a panel discussion featuring Maggie Toko (Victorian Mental Illness Awareness Council), Dr Gunvant Patel (St Vincent's Hospital, Forensicare and the Mental Health Tribunal) and Dr Piers Gooding (Melbourne Social Equity Institute).

Finally, November also saw the first PhD completion seminar by a student supported by MSEI. Gemma McKibbin spoke about her research on sexually abusive behaviour by young people, with the event also serving as a launch for a policy paper – “I knew it was wrong but I couldn't stop it”: Young people identify three opportunities for preventing sexually abusive behaviour – co-authored by Gemma McKibbin and her supervisors Prof Cathy Humphreys and Assoc Prof Bridget Hamilton.

Lecture Series for Asylum Seekers

Across September and October, MSEI partnered with Researchers for Asylum Seekers to host its third lecture series for asylum seekers. The six-part series recognises that people seeking asylum often have limited opportunities to engage with other members of the broader community and often experience significant barriers to work and study. It provides a way for asylum seekers to learn more Australian society, practice their English language skills, and engage in thoughtful discussion and reflection in an open and comfortable academic environment.

The structure and themes for the lecture series were developed in consultation with the Red Cross. Topics covered included Indigenous histories, the history of migration, workplace culture, political systems and human rights. The 2016 lecture series attracted audience members from 16 different countries. The ages ranged from 18 to 73, with over 50% of attendees having been in Australia for less than one year.

The 2016 lecture series was complemented by a range of social and education events, including a tour of Melbourne Museum and a visit to Government House.

Financial Statement

Income

Balance brought forward	\$5,048
Funds from the Deputy Vice-Chancellor (Research)	
Core MSEI funding	\$992,000
Alliance to End Violence Against Women and their Children	\$90,000
Space charges contribution	\$30,000
Internal grants	\$110,886
External grants	\$92,867
Philanthropic donations	\$6,750
Total Income	\$1,322,503

Expenditure

Directorate staff salaries	\$437,999
Research staff salaries	\$192,136
Research project costs	\$92,867
Operating expenses	\$77,196
Alliance to End Violence Against Women and their Children	\$90,000
Seed-funded projects	\$365,000
Partnership development	\$10,000
PhD scholarships	\$24,500
Visitors	\$7,480
Space charges	\$30,000
Total Expenditure	\$1,327,178
Surplus	\$373



MELBOURNE
SOCIAL EQUITY
INSTITUTE